

Chess



What is chess

Chess is a board game played between two players. It is played on a chessboard, the battlefield, which is a square-checkered board with 64 squares arranged in an eight-by-eight grid. It's a game of strategy requiring long term and short term planning.

What is the objective of the game

The objective of each player is to checkmate the opponent. That means bringing the enemy king in such a position that when attacked it has no available square on which to move. When a player checkmates his opponent king he wins the game.

Chess



INITIAL SETUP

Chess is played on a square board of eight rows (called ranks and denoted with numbers 1 to 8) and eight columns (called files and denoted with letters a to h) of squares.

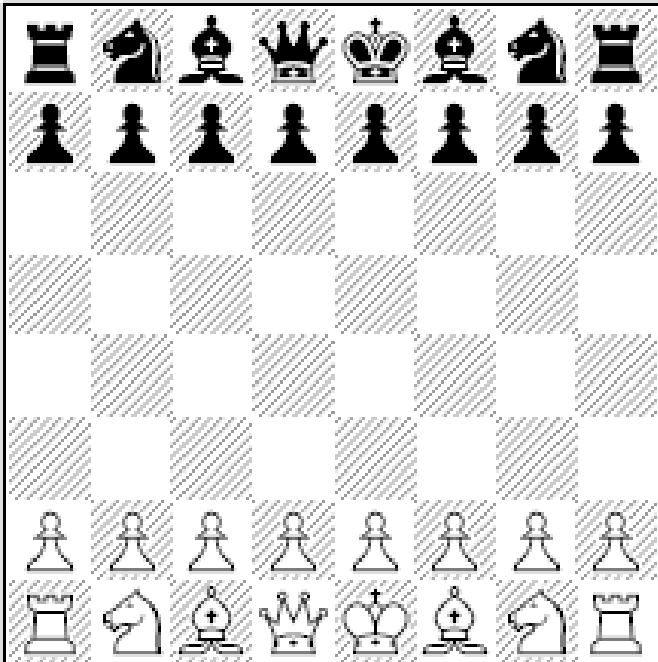
The colors of the sixty-four squares alternate and are referred to as "light squares" and "dark squares". The chessboard is placed with a light square at the right hand end of the rank nearest to each player, and the pieces are set out as shown in the diagram, with each queen on its own color.



Chess

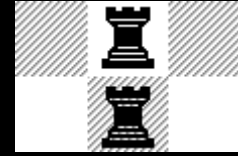


At the start, each player controls sixteen pieces: one king, one queen, two rooks, two knights, two bishops, and eight pawns. The sides are divided by convention into white and black sets.



The players are referred to as "White" and "Black" regardless of the actual colour of the pieces, and each begins the game with sixteen pieces of the specified colour.

Chess



The 3 stages

The game is made up of 3 stages which are the opening, middlegame and endgame.

OPENING – This covers the period from the beginning of the game to the next 10 or so moves from each side. There is a great deal of theory on the opening which has evolved considerably as new ideas have come about and old ones been superseded.

MIDDLEGAME – This is the most difficult and complex part of the game where each side strives to improve its position from the opening.

ENDGAME – There are relatively fewer pieces in the endgame. It is the most scientific part of the game. With correct play from both sides, a win or draw can be demonstrated or forced. There is considerable theory on the endgame but a good deal of it has not changed in many years.

Chess

The pieces are divided, by convention, into white and black sets. The players are referred to as "White" and "Black", and each begins the game with sixteen pieces of the specified color. These consist of one king, one queen, two rooks, two bishops, two knights and eight pawns.

The board is always set up with a light square at the bottom right-hand corner. The board in chess is set up the same way as in checkers or draft.

Chess



Origins of the game

The current form of the game emerged in Europe during the second half of the 15th century after evolving from a much older game (Shatranj) of Indian origin.

The object of the game is to checkmate the opponent's king, whereby the king is under immediate attack (in "check") and there is no way to remove or defend it from attack on the next move

The tradition of organized competitive chess started in the 16th century. The first official World Chess Champion, Wilhelm Steinitz, claimed his title in 1886; World Champion as at 6 March 2010 was Viswanathan Anand.

Today, chess is one of the world's most popular games, played by millions of people worldwide at home, in clubs, online, by correspondence, and in tournaments.

Chess



THE PIECES – CLASSIC STAUNTON STYLE SET



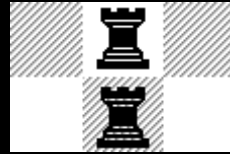
From left to right: a pawn, a rook, a knight, a bishop, a queen, and a king

THE PIECES – VINYL SET



From left to right: a white king, a black rook, a black queen, a white pawn, a black knight, and a white bishop

Chess



The relative value pieces

- The pawn is valued at 1,
- Bishops and knights are worth 3 (or 3 pawns),
- The rook 5 (5 pawns), and the queen 9 (pawns);
- The king is priceless.
- The relative values guide you are you play the game and consider exchange
- The bishop is valued the same as the knight though they move different.
- The queen is the most valuable piece.

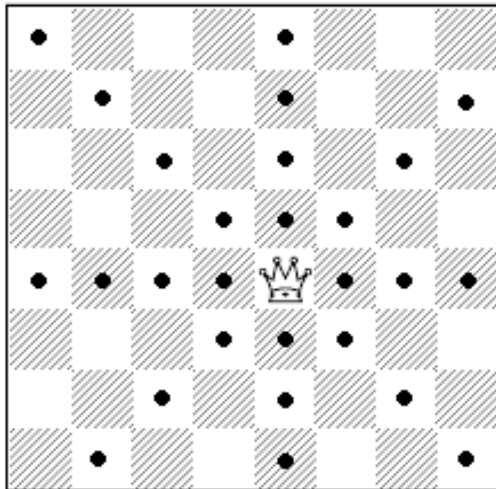
Chess



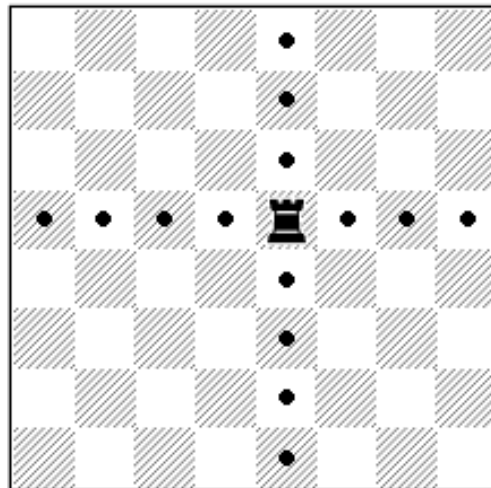
Movement of the pieces

Each chess piece has its own style of moving. The dots below indicate the possible destination of the piece. The knight is the only piece that can jump over other pieces. If there is an opponent's piece at the destination square, then the moving piece can capture the opponent's piece. The only exception is the pawn which can only capture pieces diagonally forward.

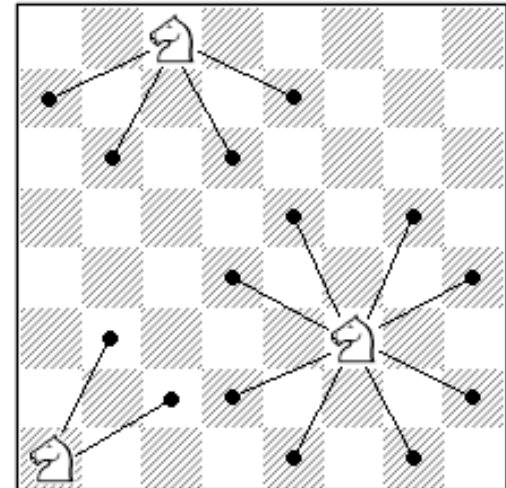
Queen



Rook



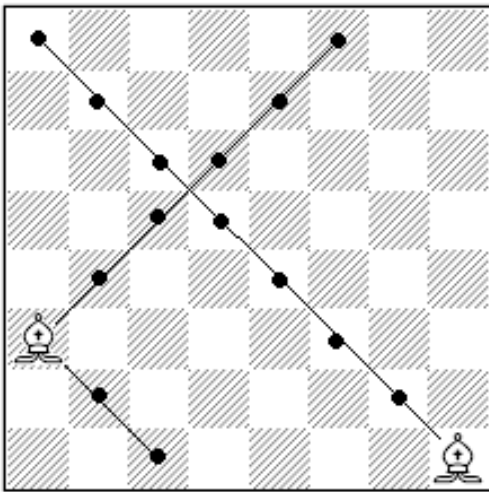
Knight



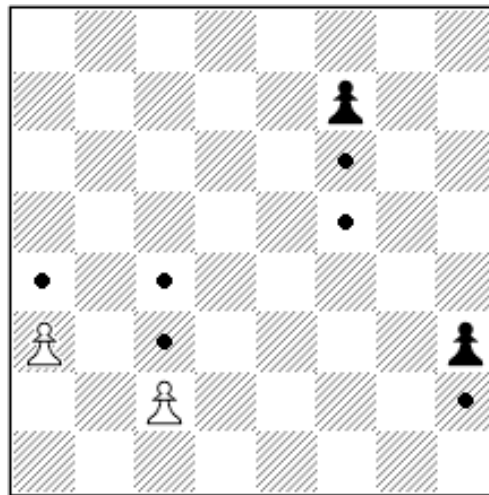
Chess



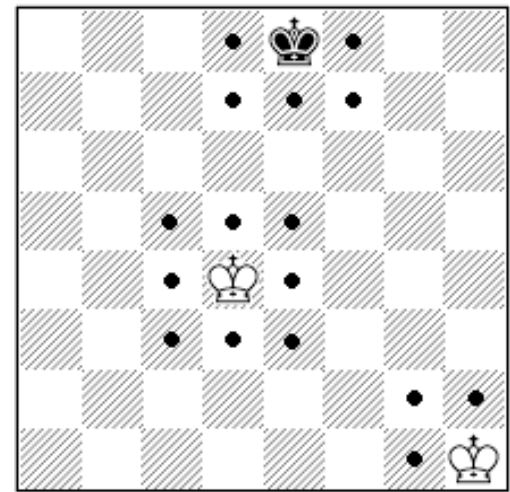
Bishop



Pawn



King



Chess



Basic Rules

- When a king is in check and can't in any way escape, he is **Checkmated**.
- White **always** moves first in a game.
- You may not move any piece blocking check if it exposes the king to check.
- If you touch a piece, you have to move it. A move is final when you let go.
- If your king isn't in check, and you don't have a legal move, you are **stalemated**, and the game is a tie, or **draw**.
- If 50 moves go by without a capture or pawn move, the game is drawn.
- Players may agree to a draw at any time during a game

Chess



- If a player can keep checking forever, (you can move to protect your king, but you can't escape or stop him: he draws by ***perpetual check***. When a player can demonstrate that the same position has occurred three times during a game, that game is drawn. Another reason to record.
- When there is not enough force on the board for either side to checkmate, (for instance a lone king versus a king and a bishop,) the game is drawn by ***insufficient force***.

Other concepts

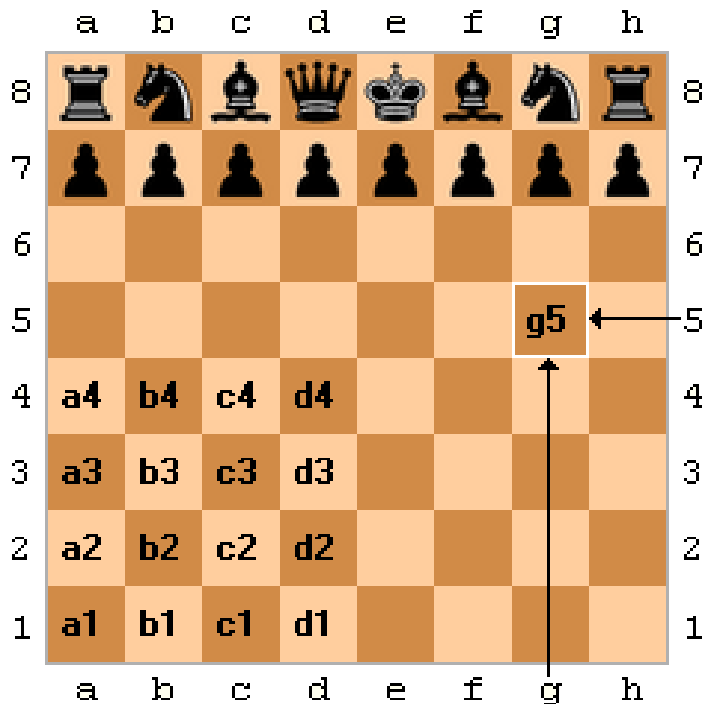
Castling

En passant

Chess



Chess notation



Columns from a to h are called files.
Rows 1 to 8 are called ranks.

Chess games and positions are recorded using a special notation, most often algebraic chess notation. Abbreviated (or short) algebraic notation generally records moves in the format abbreviation of the piece moved - file where it moved - rank where it moved, e.g. Qg5 means "queen moves to the g-file and 5th rank (that is, to the square g5).

Chess

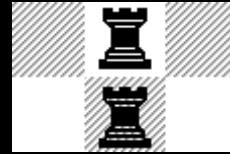


Sources

Wikipedia

Hickory Chess Club website

Chess



Questions??

Thanks you

Contact: btm@brucemubayiwa.com

